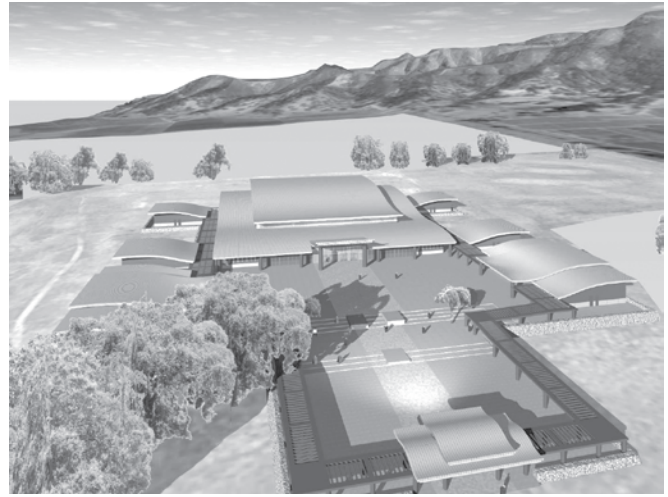


# 妙覺山計劃

## WONDERFUL ENLIGHTENMENT MOUNTAIN PROJECT

妙覺山計劃 公關組提供  
BY PUBLIC RELATIONS OF IIP&E PROJECT



妙覺山計劃是萬佛城東邊的新校區。80年代時的居士訓練機構現在已輾轉成爲一所主辦世界宗教交流、僧伽訓練及其它多種用途的教育機構。妙覺山計劃將繼續致力於長久以來的高等教育傳統，推行眾所認同的道德，如仁慈心、不殺生及環保來造福人類。藉此也可以促進東西文化、倫理哲學的互相了解及實踐。

位於20畝地上的校區將建設高達332,000平方英尺的嶄新建築物、其中包括各式景觀、基本設施及道路。提案中的建築物如下，不過施工將由大殿、齋堂及南邊的宿舍先開始。

### 多用途大殿

此乃大型、多用途建築物。活動式的隔牆可以分出各種大小不同的教室及講堂。日常禮佛的區域有五尊大佛像。大殿周遭有盥洗室、機械室及小教室等的小型建築物。尚有位於三合院兩邊的祖師殿及觀音殿。它們的總面積是71,000平方英尺。

### 齋堂

齋堂能容納2800人。它有多種用途並能利用活動式隔牆來隔間。同時，它也具有現代化的廚房及有演講壇的講堂。齋堂的總面積是64,500平方英尺。

### 南方的宿舍

The IIP&E is a new eastern campus to the City of Ten Thousand Buddhas. Originally conceived in the 1980's as a Lay Training Institute, it has since evolved into a Monastic Training Institute and multi-purpose educational facility capable of hosting world-wide gatherings for inter-faith dialogue and study.

The IIP&E is dedicated to continuing a long-standing tradition of higher education that seeks to promote universal concepts of humanness, respect for life, respect for the environment, and the betterment of humankind. As such, it will promote the study and understanding of ethical philosophies and practices of both Eastern and Western cultures.

The campus will consist of a maximum of 332,000 square feet of new buildings on 20 acres along with landscaping, infrastructure, and new roads. The proposed buildings are as follows, with the Assembly Hall, Dining Hall and South Dormitory constructed first:

### Multi-Purpose Assembly Hall

This facility consists of a large multi-purpose building with flexible partitions that can accommodate a variety of classrooms and lecture halls. The facility is centered around a chapel area with five large Buddha statues. There are four smaller structures around the main building housing restrooms, mechanical rooms, and smaller classrooms. Two large chapels and meditation classrooms are on the sides of the forecourt. The total square footage is 71,000 square feet. One of the latest designs is in the background.

### Dining Hall

The Dining Hall accommodates a maximum capacity of 2800 people. It is also multi-purpose and can be subdivided in the future by movable partitions. Part of the building is a modern kitchen and part of it is a multi-purpose lecture area with a stage. The total area of the dining hall is 64,500 square feet.

### South Dormitory

The South Dormitory has four buildings. Two of the buildings are



校區的南邊有四棟宿舍。兩棟建築物是供老師及訪問教授用，另外兩棟則是學生的。宿舍在齋堂的西邊，它自然而然地環拱著這段區域的出入口。四棟樓的總面積是33,000平方英尺。

### 圖書館

現有計劃中的圖書館有三層樓並位於齋堂北邊。除了收集佛教及世界宗教的珍藏外，那兒還有教室及善本書籍區。男女眾有個別的閱覽室。圖書館大約是28,200平方英尺。

### 戒壇

戒壇是一層7,200平方英尺的建築物。它主要是為了傳戒而建，內含授戒及禮佛區。

### 寮房

建地北邊是男女出家眾的住區。總面積佔126,000平方英尺。

### 進出

訪客可由朝山道前往大殿。老弱者有專車接送往返大殿。自用車可停在西側邊。

建築物的風格是東西合璧式的。主要建築皆在中軸線上、略帶弧度的屋簷、三合院及東方性景觀的戶外庭院都意味種種中國傳統建築特色；而極具彈性的空間設計、使用長形跨度天花板結構、現代化的宿舍及持久性的環保設計策略都足以表達西方的建築傳統。

整個設計上的美感及比率皆具整體性。它們和大自然協調一致，並完全符合郡政府的規定：不在鄰居的視野內。

妙覺山計劃位於農地分區上，本為農耕專用，但目前郡政府的土地使用計劃尚允許農地上的建設作為教育用途。也因此，妙覺山計劃能夠成立，只是大殿平時的運作必須符合多元化的教育功能。曼都仙諾郡更堅持大殿日常僅能容納800人（600位學生及200位老師）。

郡政府的土地規劃部門於2004年5月承認法總的行使證已生效。每棟建築物必須在接下來的八年內動工。

for faculty and visiting teachers and two are for students. The South Dormitory is located west of the Dining Hall and forms a western gateway to the complex. The total square footage of the four buildings is 33,000 square feet.

### Library

At approximately 28,200 square feet, the library is north of the Dining Hall. Besides collections on Buddhism and world religions, there will be classrooms and an area for rare books. Men's and Women's Reading Rooms are separate.

### Precept Hall

The Precept Hall is a one-story building of about 7,200 square feet. It is primarily for the taking of precepts, and includes a Precept Room and a Bowing Room.

### Housing

The northern end of the site has housing for male and female monastic students. There is a total of 126,800 square feet.

### Access

Visitors may reach the main complex by way of a processional walk. The elderly or infirm will be shuttled to the Assembly Hall. Private cars will have to park at the western edge.

The buildings are being designed to combine Eastern and Western architectural styles. The Chinese tradition is reflected in the strict axial organization of the whole complex, with the main buildings centered on the axis. The curved roof forms, the partially enclosed forecourt in front of the Assembly Hall, and the series of outdoor courtyards — some also reflect Eastern landscaping. The Western architectural tradition is evident in the highly flexible space planning, the long span structural systems, the modern style dormitory housing, and the sustainable design strategies.

The whole complex is designed to be coherent and unified in its style and proportions. It is also designed to be in harmony with its natural surroundings and, in accordance with the County mandates, discrete in terms of visual impact to the neighbors.

The project sits on zoned agricultural land, but the current County Land Use Plan allows for an exemption for educational use. The day-to-day usage must be multi-functional and educational. The County of Mendocino further defined the usage of the Assembly Building to 800 people on a daily basis — 600 students and 200 teachers.

In May 2004, the County Planning Department determined that DRBA had made enough progress to have vested its Use Permit. All buildings must have at least started construction within the next eight years.